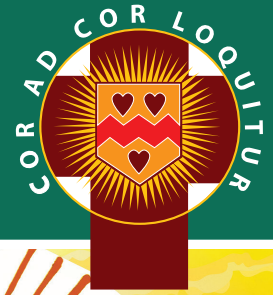


ST. THOMAS MORE NEWMAN CENTER
NEWMAN NEWS

Fourth Sunday of Easter | May 3, 2020 | www.comonewman.org



VIRTUAL MASS TIMES

SUNDAY: 11 a.m.

WEEKDAY: Noon

Visit www.facebook.com/CoMoNewman/video to watch our livestream Masses.

RECONCILIATION:

Tuesdays & Saturdays: 4-4:30 p.m.

BUILDING HOURS:

Monday — Saturday:

8-10:30 a.m. & 2-5 p.m.

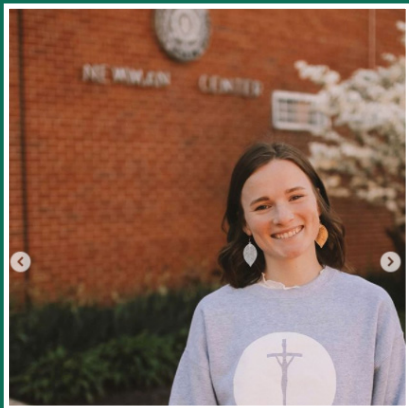
Sunday: 2-5 p.m.

COME, FOLLOW ME



[.com/CoMoNewman](https://www.facebook.com/CoMoNewman)

 **#COMONEWMAN
PHOTO OF THE WEEK**



@k.nats

Thanks for 4 unforgettable, challenging, wild years, MIZ — I'd do it all over again if I could. You have my whole heart
[@comonewman](https://www.facebook.com/comonewman) [@mizzoucatholic](https://www.facebook.com/mizzoucatholic) [@focuscatholic](https://www.facebook.com/focuscatholic)



4th
SUNDAY OF EASTER

"Whoever enters through the gate is the shepherd of the sheep. The gatekeeper opens it for him, and the sheep hear his voice, as the shepherd calls his own sheep by name and leads them out." - Jn 10:2-3

Excerpts from the Lectionary for Mass ©2001, 1998, 1970 CCD.

IN THIS WEEK'S ISSUE

**Jesus to Show Us
a Better Way**

By Fr. Mike, O.P.
Page 2

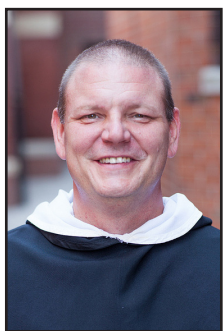
**Sunday
Readings**

for May 3
Page 4

**Newman Volunteer
Corps**

Earth Day Prayer Walk
Page 5

JESUS TO SHOW US A BETTER WAY



FR. MIKE
Associate Pastor

I always find it interesting how, despite a desire to try to be new and innovative in my faith life, I tend to fall into certain patterns. At times it seems to me that this is not necessarily a good thing. However, this Sunday's Gospel, the Good Shepherd, eventually gets me to the point where I can see a great example of how this can work, and work out very well. Here is what I mean by "eventually."

Have you even read and reflected upon today's Gospel and asked yourself, "Did Jesus just call me a sheep?" A sheep ... really? Whenever I try to come up with a good simile for my faith life, being like a sheep does not jump out as what I would pick

as my first choice. Sheep have never struck me as the smartest, bravest, or most creative creatures on the planet. Wouldn't it be better if Jesus wanted followers like eagles and lions, or maybe even wise and cunning creatures like owls? But then I remember it is important — as we explore the message — that Jesus, our God and true teacher, was trying to get across to us to think of the big picture. It is no accident that he began this teaching with himself as the "shepherd" and introduces the "gate keeper," who has always stood out to me as the Holy Spirit.

Thinking of ourselves solely as independent creatures in the spiritual sense just doesn't make sense or even work. We need guidance. We need direction. We need an example to follow. We need to know that when life gets difficult, there is someone who cares enough for us as individuals and is willing to go out of His way to help us, to come and find us when we stray, and to be there to nurture and love us when it is needed. To put it another way, we need help! And let's face it, brothers and sisters, without Jesus to show us a better way to live and relate with those around us, life would be far too difficult. Hence, the reason we need a good shepherd.

Another thing that helps me to embrace my personal, internal, and spiritual sheepishness is built into the notion of the gate in this parable. At times it can seem like following our good shepherd might be a bit too constrictive. Why shouldn't we be able to take a few shortcuts and do things the "easy way?" Every time I start thinking about how narrow that gate may seem, I recall something one of my favorite spiritual and apologetics writers, G. K. Chesterton, mentioned.

On his own spiritual journey, which started from the quintessential, self-proclaimed stance of a modern atheist, he talks about one of the most interesting discoveries he made during his conversion to Catholicism. And in a way, he was speaking about the gate in today's reading. On his journey to the faith, he mentioned that he found the Catholic Church was much "larger on the inside" than he ever imagined when was viewing it from afar. In other words, that while that gate may "seem" to be very narrow, it opens up to a bigger and happier reality than we might think.

As we continue on this current part of our spiritual journey, my sisters and brothers, let's remember to look into the vastness of the possibilities our faith tradition opens up for us. Given all the challenges we are facing because of the coronavirus, I think today's Gospel is a good reminder that there are many ways in which we can explore our faith and grow in our relationship with God and His Church.

I hope if you are ever asked if you mind being called a sheep in the spiritual sense, you will join me in saying a resounding: "Naa-aaa-aaa-aaa. Look who my Shepherd is!"

Fr. Mike, O.P.

EASTER FLOWER OFFERINGS



Easter flower offerings were made in honor and memory of the following people:

Ed & Shawna Bier
Theresa Lisitano
Fr. Charlie Pardee
Barbara Clark
Julia Darcy
Natalie Beishir
The Gulino Family
Cathy Hays
Martha Kendrick
Juanita Hough
Phyllis Beckerman
William Beckerman
Carolyn Johnson
John & Helen Sheehan
Christa & Lawrence Katz
Susan M. Katz
Erika Voss
Robert & Josephine Voss
Don Schmit
Nancy Schmit
Paul Kerpash
Mary Ann Kerpash
Sharon & Kim Kronk
Lucy & John Kronk
John & Richard Kronk
Herb & Mary Meisinger

Bob & Ruth Barr
Josef & Josephine Meisinger
Alvin & Beatrice Barr
Betty & Jack Bayliss
Joseph Meisinger Jr.
Grandpa & Grandma Minner
George & Nell Hage
Aunts & Uncles of Angie Minner
Meredith
Peggy
Jeff Meirssert
Henryettea
John & Mary Doggett
Thomas Bacon
Noime Hodgson
Jim Pringle
Dugan Speckhals
Jerry Dubes
Emil & B. Mary Elsenroot
Mabel Schulz
Charles Schulz
Jean Sitar
Frank Sitar
Norb & Deel Feddema
Charles Feddema
Taylor Nicole Sundet

HELPFUL LINKS

- Viewing the Livestream Mass: visit www.comonewman.org/view-newmans-livestream-mass (or click the "Livestream Mass" button on our website) to watch our livestream Masses and view our Sunday worship aids.
- Public Health Information: Visit www.comonewman.org/public-health for the most updated information on our procedures and event cancellations.
- Prayer Resources: Visit www.comonewman.org/prayer-resources for links to daily Masses, readings, and other prayer opportunities





WE PRAY

for our Newman Community

For those who are sick.

For our beloved dead. Eternal rest grant unto them and let perpetual light shine upon them. May they rest in peace. Amen.

Pope Francis' May Prayer Intention: We pray that deacons, faithful in their service to the Word and the poor, may be an invigorating symbol for the entire Church.

Bishop McKnight's May Prayer Intention: As we honor the Mother of our Lord as the "Queen of May," may there be a greater respect and appreciation for all women on earth who nourish us in mind, body and soul.


Call the Parish Office to request prayers or assistance if you are homebound. Names will be listed in the bulletin for two weeks.

Prayer to the Immaculate Heart of Mary for Protection from the Coronavirus

O Immaculate Heart of Mary, we entrust ourselves to you, Health of the Sick. At the foot of the Cross, you participated in Jesus' pain, with steadfast faith. Patroness of the Diocese of Jefferson City, you know what we need. We are certain of the power of your intercession, so that, as you did at Cana of Galilee, joy and feasting might return after this moment of trial. Help us, Mother of Divine Love, to conform ourselves to the Father's will and to do what Jesus tells us: He who taught us to "love one another, as I have loved you" took our sufferings upon Himself and bore our sorrows to bring us, through the Cross, to the joy of the Resurrection. Bring under your mantle of protection all who provide care for the sick and minister to their needs, as your Son implores us to do for one another.

V. We seek refuge under your protection, O Holy Mother of God.

R. Do not despise our pleas and deliver us from every danger, O glorious and blessed Virgin. Amen.




COVID-19

CORONAVIRUS

Stay Connected with the Diocese of Jefferson City
diojeffcity.org/public-health

Volunteer or request assistance
 Updates from the diocese
 General health directives/CDC updates
 Communication tools ...and much more



DIOCESE OF
Jefferson City

**BETTER
TOGETHER**

MASS INTENTIONS

Monday, May 4	Noon	† Charles Wilson
Tuesday, May 5	Noon	† Bobbie Lovett
Wednesday, May 6	Noon	† Jillian Goehl
Thursday, May 7	Noon	† Mrs. Magdalen Simone Schmitz
Friday, May 8	Noon	† Gregory Pezold
Sunday, May 10	11 a.m.	Helen Sheehan

Please call the Parish Office at (573) 449-5424 to request a Mass intention.

PARISH FINANCES

April 25/26

Offertory*	\$20,976.11
Month-to-Date	\$111,998.43
Budget for month	\$115,000.00
Variance	— \$3,001.57

**This includes EFT giving, mailed envelopes, and online donations through credit/debit cards and Venmo. Thank you for your continued support of the parish!*

CONTACT INFORMATION

602 Turner Avenue | Columbia, MO 65201 | (573) 449-5424
www.comonewman.org | All emails end in: @comonewman.org

Pastoral Staff

Servant Leader | Fr. Rich Litzau, O.P. | rlitzop
Associate Pastor | Fr. Mike Ford, O.P. | mfordop
Associate Pastor & Diocesan Vocations Director
Fr. Christopher Aubuchon | vocations@diojeffcity.org
Pastoral Associate | Sr. Karen Freund, O.P. | srkaren
Deacon | Frank Ruggiero | frank.ruggiero
Deacon | Gene Kazmierczak | deacon.gene

Campus Ministry

Director | Angelle Hall | angelle.hall
Assistant Director | Yvonne Chamberlain | yvonne
Development Director | JoAnn Shull | joann.shull
Resident Campus Minister | Allison Stuesse | allison
Office Assistant | Terri Brown | campus.ministry

Music & Liturgy

Director | Kelley Burns | kelley.burns
Assistant Director | Joe Kouba | joe.kouba
Assistant Director | Mary Mertes | mary.mertes

Faith Formation

Director of Religious Education | Emily Shull | emily.shull
Director of Youth Ministry | Renee Molner | renee.molner
RCIA Coordinator | Lisa Rose | lisa.rose

Office

Receptionist | Janet Kelly | reception
Accounts Manager | Angie Claas | angie
Communications Coordinator | Theresa Nguyen | theresa

SUNDAY READINGS

FIRST READING (ACTS 2:14, 36-41)

Then Peter stood up with the Eleven, raised his voice, and proclaimed: "Let the whole house of Israel know for certain that God has made both Lord and Christ, this Jesus whom you crucified."

Now when they heard this, they were cut to the heart, and they asked Peter and the other apostles, "What are we to do, my brothers?" Peter said to them, "Repent and be baptized, every one of you, in the name of Jesus Christ for the forgiveness of your sins; and you will receive the gift of the Holy Spirit. For the promise is made to you and to your children and to all those far off, whomever the Lord our God will call." He testified with many other arguments, and was exhorting them, "Save yourselves from this corrupt generation." Those who accepted his message were baptized, and about three thousand persons were added that day.

RESPONSORIAL PSALM (PS 23)

R. The Lord is my shepherd; there is nothing I shall want.

The Lord is my shepherd; I shall not want.

In verdant pastures he gives me repose;
beside restful waters he leads me;
he refreshes my soul.

He guides me in right paths
for his name's sake.
Even though I walk in the dark valley
I fear no evil; for you are at my side.
With your rod and your staff
that give me courage.

You spread the table before me
in the sight of my foes;
you anoint my head with oil;
my cup overflows.

Only goodness and kindness follow me
all the days of my life;
and I shall dwell in the house of the Lord
for years to come.

SECOND READING (1 PT 2:20-25)

Beloved: If you are patient when you suffer for doing what is good, this is a grace before God. For to this you have been called, because Christ also suffered for you, leaving you an example that you should follow in his footsteps.

He committed no sin, and no deceit was found in his mouth.

When he was insulted, he returned no insult; when he suffered, he did not threaten; instead, he handed himself over to the one who judges justly. He himself bore our sins in his body upon the cross, so that, free from sin, we might live for righteousness. By his wounds you have been healed. For you had gone astray like sheep, but you have now returned to the shepherd and guardian of your souls.

GOSPEL (JN 10:1-10)

Jesus said: "Amen, amen, I say to you, whoever does not enter a sheepfold through the gate but climbs over elsewhere is a thief and a robber. But whoever enters through the gate is the shepherd

of the sheep. The gatekeeper opens it for him, and the sheep hear his voice, as the shepherd calls his own sheep by name and leads them out. When he has driven out all his own, he walks ahead of them, and the sheep follow him, because they recognize his voice. But they will not follow a stranger; they will run away from him, because they do not recognize the voice of strangers." Although Jesus used this figure of speech, the Pharisees did not realize what he was trying to tell them.

So Jesus said again, "Amen, amen, I say to you, I am the gate for the sheep. All who came before me are thieves and robbers, but the sheep did not listen to them. I am the gate. Whoever enters through me will be saved, and will come in and go out and find pasture. A thief comes only to steal and slaughter and destroy; I came so that they might have life and have it more abundantly."

Excerpts from the English translation of Lectionary for Mass © 1969, 1981, 1997, International Commission on English in the Liturgy Corporation, (ICEL); excerpts from the English translation of The Roman Missal © 2010, ICEL. All rights reserved.

Prayer for a Communion of Desire

My Jesus, I believe that You are present in the Most Holy Sacrament. I love You above all things, and I desire to receive You into my soul. Since I cannot at this moment receive You sacramentally, renew my heart now with the power of Your Spirit. I embrace You and unite myself wholly to You. Unite me more closely to Your Body, the Church. And never permit me to be separated from You. Amen.



CONTINUING YOUR SUNDAY TITHE

In the Bishop's instructions to the faithful of the diocese, he has asked us to continue our Sunday offertory tithe by postal mail or electronic means. If you are already giving through EFT (electronic funds transfer) or through your credit/debit card online, your gift will continue as you have previously set it up. Thank you for your commitment to the parish through this giving option. If you are accustomed to giving to the offertory through cash or your envelopes, please consider continuing your gift in one of the following ways:

- Electronic Funds Transfer (EFT)
- Credit/Debit Card or Bank Account through online giving
- Venmo — a PayPal app
- Mail Your Gift through USPS

You can learn more about these options or set up an electronic way of giving on our website at www.comonewman.org/parish/support/offertory. If you have any questions, please contact Angie Claas at angie@comonewman.org.



CURRENT PROCEDURES

PARTICIPATE IN MASS ONLINE

We are livestreaming daily Mass and the 11 a.m. Sunday Mass on our Facebook page, @comonewman. **You can view the livestream even if you do not have access to Facebook.** The livestream will begin 15 minutes prior to the Mass time, and the video will be available to view after the Mass is over.

➤ Visit www.comonewman.org/view-newmans-livestream-mass (or click the "Livestream Mass" button on our website) to watch our livestream Masses and view our Sunday worship aids.

All the faithful of the Diocese of Jefferson City, and those who are present in the territory of the Diocese, are dispensed until June 30, 2020 from the obligation to attend Sunday Mass.

FOR THOSE IN QUARANTINE

If you are self-quarantined due to age or health and need someone to check on you every few days via phone, the Long Term Care/Homebound Ministry team will help you. If you need an essential item such as groceries or medications, let us know. We will try to identify a resource to help you. Contact the parish office at (573) 449-5424 or email Janet Kelly at reception@comonewman.org.

BUILDING HOURS

The building is open for private prayer Monday through Saturday from 8-10:30 a.m. and 2-5 p.m. and on Sundays from 2-5 p.m. Reconciliation will continue as scheduled on Tuesdays and Saturdays from 4-4:30 p.m.

Jesus has been moved to the Tabernacle in the main Chapel, and you are welcome to pray there while the building is open. Please be mindful of distancing and having less than 10 people in the Chapel at any time. Please enter through the side door on Turner Avenue. The parish office is closed, as well as the classrooms upstairs and the student lounge. Staff will continue to regularly check phones and emails.

NEWMAN VOLUNTEER CORPS

EXECUTION DATE SET IN MISSOURI

The state of Missouri has set an execution date of May 19 for Walter Barton, who was convicted for killing Gladys Kuehler in 1991. While the Missouri Supreme Court affirmed Mr. Barton's conviction and death sentence, the three dissenting Missouri Supreme Court Justices stated that the evidence against Mr. Barton was "not overwhelming" and was insufficient to warrant the death penalty.

The state of Missouri has executed 89 persons since the reinstatement of the death penalty. The most recent was Russell Bucklew in October 2019. Many states are halting scheduled executions during the coronavirus pandemic, and the governor hasn't yet indicated as to whether he will go forward in Mr. Barton's case. The MCC will be sending a clemency petition to the governor asking him to commute Mr. Barton's sentence to life without parole. Sign a petition to ask the governor to grant clemency here: <http://chnng.it/VZ9xSvks>.



EARTH DAY PRAYER WALK

Last month, we were able to celebrate the 50th anniversary of Earth Day and the 5th anniversary of Pope Francis' encyclical Laudato Si. We invite you to continue living out these principles of sustainability and care for creation during this time of spring. Emma Heienickle, our Service & Social Justice Intern, created a prayer walk in hopes you can take a step back from technology and take a step into the fresh air God created for us. Emma wrote the reflection and many of the prayers were found through the Climate Catholic Conference's website. Download the Prayer Walk on our website at www.comonewman.org/service-social-justice.

COMO CRISIS SHELTER

The Gail Plemmons Memorial Car Camp and Crisis Triage Center is hosting the CoMo Crisis Shelter, which is providing safe parking for those who are living in their cars during this time. This center includes bathrooms and handwashing stations. Please share this information if you know someone in need. Visit www.comocrisishelter.com for volunteer and donation information.

VOLUNTEER FROM HOME FOR THE FOOD BANK

The Food Bank and Central Pantry have hired employees to fill in the roles that volunteers would typically complete. The Food Bank is no longer accepting volunteers at this time.

The Food Bank would like to share this message during Volunteer Appreciation Week: "Even though we cannot celebrate together as we had hoped, we can still recognize your accomplishments and contributions over the last year. In 2019, 15,000 people came to help at The Food Bank, contributing over 100,000 hours. Those numbers are astounding and show that our work would be impossible without you!"

Here are some ways you can help from home:

1. Veterans Letters: Letters or drawings for our veterans for inclusion in VIP packs.
2. VIP Pack Items: Knitting hats or scarves for us to include in winter VIP packs.
3. Letters for Seniors: Letters or drawing for our seniors for inclusion in CSFP boxes. You can also send a letter to local senior living facilities in a time when they cannot have visitors, these letter could go a long way for lifting their spirits!
4. Advocacy Superstars: Join us on social media and advocate for The Food Bank by sharing information, posts and encouraging others to like us on Facebook, Twitter or Instagram. You can also follow Central Pantry on Facebook. Share information on our work is a great way to help, but if you want to take it a step forward, start your own virtual fundraising drive!
5. Profile Updates: Help us update our volunteer system by logging in and updating your profile with the most current information. If you have questions, please give us a call!
6. Virtual Volunteering: The link below has a fantastic assortment of virtual volunteer opportunities for the whole family! www.pointsoflight.org/virtual-volunteering-opportunities

CEP & EDGE

EDGE BIBLE STUDIES

For the month of May, we'll have a ladies Bible study on Wednesdays and a guys Bible study on Thursdays. If you're interested, contact emily.shull@comonewman.org.

FIRST COMMUNION POSTPONED

Bishop McKnight has asked that all sacrament celebrations be postponed until at least June 14. We'll be in touch via email when we're able to plan further. If you are not getting emails, contact emily.shull@comonewman.org.

KIDS' CORNER

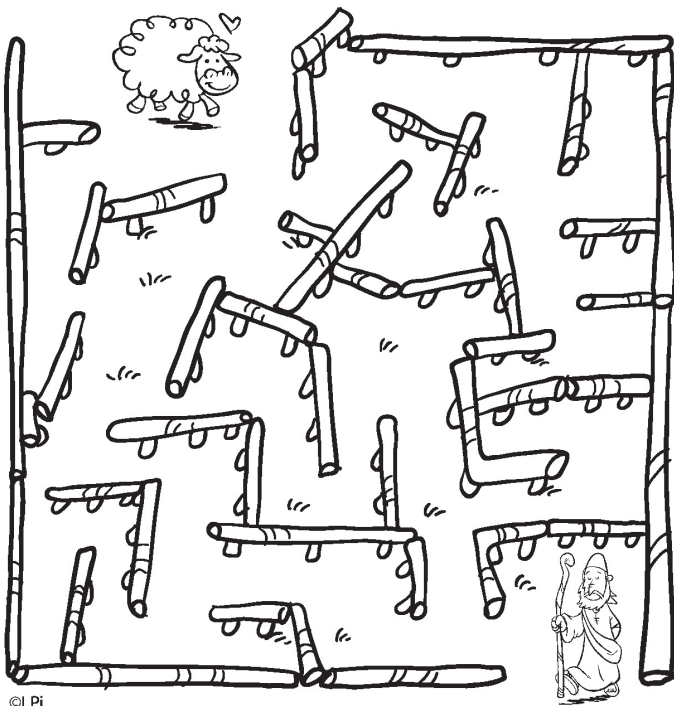
For Kids: If you are ever worried, you can ask Jesus our Good Shepherd for help.

For Parents: Jesus cares for us just the way the shepherd cares for the sheep. This week, ask God for what your family needs and the trust to let go and ask him to carry your burdens.



Puzzle

Help the sheep find the shepherd.



CAMPUS MINISTRY



All registrations/RSVPs for campus ministry are found on the website under *Event Sign Ups*:
www.comonewman.org/campus-ministry/cmsignup

PRAYERS FOR FINALS

Please keep our students in your prayers as they wrap up their spring semester and prepare for finals.

PRAYERS & THANK YOU NOTES FOR STAFF MEMBERS

You have the opportunity to write notes to any outgoing staff member(s) you'd like to wish them well, encourage them, tell them how much they have meant to you, and especially how you are praying for them. Visit the link above to submit your messages by May 7. Any questions, contact Angelle at angelle.hall@comonewman.org.

AROUND TOWN

11TH ANNUAL TOLTON GOLF CLASSIC — NEW DATE



11TH ANNUAL
TOLTON
GOLF CLASSIC

Registration is open for the 11th Annual Tolton Catholic Golf Classic to be held Monday, June 15, at Country Club of Missouri. Registration opens at 11 a.m., with a 12:30 p.m. shotgun start. Lunch will be provided before the tournament. This is a four-person scramble with a number of prizes. \$150 individual registration fee (\$75 half-price alumni registration fee) includes a door prize, golf, cart, lunch, beverages throughout the day, and a 19th hole celebration with food and drinks.

Register your team at www.toltoncatholic.org. Sponsorships are also available! Proceeds benefit the Tolton Catholic Tuition Assistance Fund. This is an especially fun way to support Catholic education, so we hope to see you there! Questions? Contact lsasser@toltoncatholic.org.

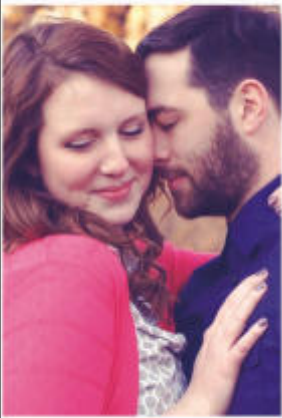


TOLTON CATHOLIC ANNOUNCES NEW LEADER

Bishop W. Shawn McKnight announced the appointment of Dr. Daniel Everett as president/principal of Fr. Augustine Tolton Regional Catholic High School, effective July 1. Dr. Everett holds a doctorate in organizational leadership from Pepperdine University and a master's degree in philosophy from Loyola Marymount University. He has served in a wide variety of roles in Catholic schools, most recently as interim head of school for St. Anne School in Laguna Niguel, California. He has also been the vice principal of curriculum and innovation and the director of service at JSerra Catholic High School in San Juan Capistrano, California; and he has taught English, math, philosophy and theology in Catholic schools in southern California. He and his family currently live in Orange County, California, which comprises the Diocese of Orange. Please join us in welcoming Dr. Everett to the Catholic community in the Diocese of Jefferson City!



catholicmatch[®]
Missouri



CatholicMatch.com/ MO



Breakfast Buffet
Saturday & Sunday

Open 6 AM Mon-Sat • 9 AM Sun
3304 Broadway Business Park Ct.
Columbia, MO 573-445-1669



**ACCEPTING
NEW PATIENTS**
573.340.6244
www.bcfddental.com

IN PAIN? CALL US!

Emergency appointments available.

ONLINE SCHEDULING

Visit our website to schedule your
cleaning or a consultation.

IN-NETWORK WITH:

Aetna Cigna Delta Dental
Ameritas Guardian MetLife

DENTAL SAVINGS PLAN

No insurance? You can still save
through our in-house plan.



Dr. Kyle Shull

Conveniently
located beneath
Wilson's Fitness
2601 Rangeline St,
Suite 111

Just Need to Talk?



Specializing in everyday
issues concerning
• Family
• Self
• Relationships
• Work

Michael J. Mayer
Licensed Psychologist and Newman Parishioner
573-443-1177

SPREAD THE WORD

A Thriving, Vibrant
Community Matters



SUPPORT OUR ADVERTISERS

**AVAILABLE
FOR A LIMITED TIME**

ADVERTISE YOUR
**BUSINESS
HERE**

Contact **Mike Anderson** to place an ad today!
manderson@4LPi.com or (800) 950-9952 x2612



Since 1977

573.442.8280

**CARPET • TILE
UPHOLSTERY CLEANING**



Since 1957

AUTO CENTER, INC.

222 N. 9th Street
Columbia, MO 65201
573-875-1442



**WE'RE HIRING
AD SALES EXECUTIVES**



- Full Time Position with Benefits
- Sales Experience Preferred
- Paid Training
- Overnight Travel Required
- Expense Reimbursement

CONTACT US AT

careers@4LPi.com • www.4LPi.com/careers

TRS Property.com

- Rental Homes
- Property Management

573-355-5522

OLL Parishioners



LA SIESTA
MEXICAN CUISINE

Visit either of our 2 locations in
Columbia, Missouri!

North: 3890 Rangeline St., Ste. 115
573-228-9844

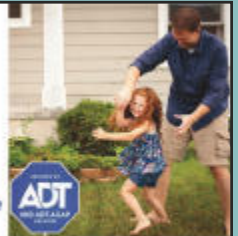
Downtown: 33 N. 9th St
573-449-6788

**Mention this ad & Get 1 FREE
Soft Drink with an Entree**

**ADT-Monitored
Home Security**

Get 24-Hour Protection
From a Name You Can Trust

- Burglary • Flood Detection
- Fire Safety • Carbon Monoxide



SafeStreets

1-855-225-4251



**FR. TOLTON CATHOLIC
HIGH SCHOOL**

573.445.7700 | toltoncatholic.org

Together, blazing a trail in Catholic education.

SPIRIT HEART MIND BODY

robinson-ries
ORTHODOX + LUTHERAN
simply outstanding orthodoxy

W. Scott Robinson, D.D.S.
Dave Ries, D.D.S., M.S.

573-466-0700

www.robinson-ries.com

Cold Storage Trailers

Great For:

Weddings
Corporate Events
Parties

TigerIceCo.com

Ice - Dry Ice - Ice Carvings - Freezer / Refrigerator Trailer Rentals



For ad info. call 1-800-950-9952 • www.4LPi.com

St. Thomas More Newman Center, Columbia

B 4C 02-0495

Prints

Make your memories last a lifetime.

mpix



Professional Contractors & Engineers Incorporated

5900-C-North Tower Dr.
Columbia, MO 65205

573-442-1113

Fax: 573-875-4478

www.pce-mo.com



John L. Wietholder, DMD
General Dentist

601 W. Nifong Blvd, Ste 3A
Columbia, MO

573.449.1918
Veteran



John & Monica Hansman

573-673-8135

www.HansmanCustomHomes.com



Allen Becvar, O.D. & Stacy Becvar, O.D.

573-441-2020

www.becvaroptometry.com

Intersection of Nifong & Forum

AVAILABLE FOR A LIMITED TIME

ADVERTISE YOUR BUSINESS HERE

Contact **Mike Anderson** to place an ad today!
manderson@4LPi.com or (800) 950-9952 x2612



Felicia Attebery

1515 Chapel Hill Rd
Columbia MO 65203
573-446-6767
573-489-3013
Licensed in State of Missouri

573-875-8787

Abundant
RAW LIFE



Jane W. Smith, D Min., AADP
abundantrawlife.com



Business Cards • Postcards • Flyers
Banners/Posters • Announcements/Invitations
Envelopes • Brochures • Direct Mail
Promotional Products • Creative Design

573-445-0227

2511 Bernadette Dr., Columbia, MO
columbia-mo.minutemanpress.com



Erdel & Wood
FLOORING • PAINT • STONE

510 Cooper Dr. N
Columbia, MO 65203
573-815-1110

NEVER MISS A BULLETIN !

Sign up to have our weekly parish bulletin emailed to you at www.parishesonline.com



Boehmer
Chiropractic & Acupuncture
445-4000

OLL Parishioners/ Palmer Graduates
* Located in The Colonies -
2216 Colony Dr. Ste. 102



SCREENPRINT • EMBROIDERY • PROMOTIONAL PRODUCTS

573-234-2951

embroideritonline.com

We'll keep you in stitches & more

891 Business Loop 70 West Lower Level Suite 122

MATT HIGGINS
REMODELING

Kitchens
Bathrooms
Basements
Home Repairs

(573) 356-9761

Too Sick for Mass?

SUPPORT OUR PARISH NO MATTER WHERE YOU ARE!

Sign-up to get your bulletin delivered
right to your inbox!

www.parishesonline.com



"Some repairs you see...
Ours you don't."

5353 N. Hwy 763
Columbia, MO 65202

Carol Miller 573-875-5877

www.centralmoautobody.com



Time To Get Your
Cooling System Checked



For ad info. call 1-800-950-9952 • www.4LPi.com

St. Thomas More Newman Center, Columbia

A 4C 02-0495