

ST. THOMAS MORE NEWMAN CENTER
NEWMAN NEWS

Third Sunday in Ordinary Time | January 26, 2020 | www.comonewman.org



MASS TIMES —

SUNDAY: 9 a.m. | 11 a.m.

5 p.m. | 8 p.m.

SATURDAY: 5 p.m.

WEEKDAY: Noon

RECONCILIATION:

Tuesday & Saturday: 4-4:30 p.m.

ADORATION:

Weekday: 8:30-9:30 a.m.

OFFICE HOURS:

Monday-Friday:

8 a.m.-Noon & 12:30-4:30 p.m.

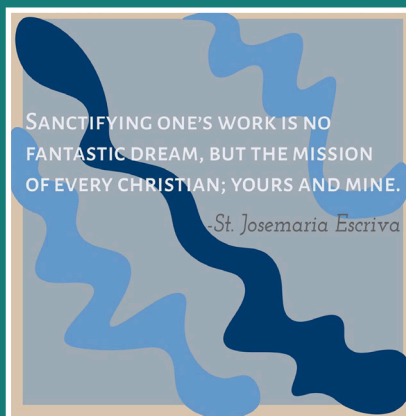
COME, FOLLOW ME



[.com/CoMoNewman](https://www.comonewman.org)



**#COMONEWMAN
PHOTO OF THE WEEK**



@comonewman

Welcome back students! As you get back in the grind of classes and college life, remember to keep Christ at the center of your work!



pts from the Lectionary for Mass ©2001, 1998, 1970 CCD.

IN THIS WEEK'S ISSUE

**A Follower of Christ
in Today's World**

By Fr. Mike, O.P.
Page 2

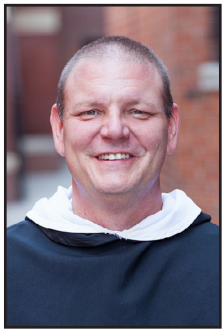
**Women's
Spirituality**

On Lenten Scriptures
Page 4

**Busy
Person's**

Retreat
Page 6

A FOLLOWER OF CHRIST IN TODAY'S WORLD



FR. MIKE
Associate Pastor

My Dear Sisters and Brothers in Christ,
When I read and pray about our Gospel reading for this weekend, I am reminded about just how amazing our Lord Jesus actually was in the way he handled things during His earthly ministry. From the very start we can see Him making some interesting and surprising choices that would change the world forever. Think about it. This weekend's Gospel reading, the call of the Apostles, shows Jesus setting the stage and choosing the people who would bring His message of God's love and forgiveness to the world and eventually to you and me.

Each and every time I reflect on these readings, I have to think about how thankful I am that Jesus was indeed so much smarter and savvier than myself. If God had come to me and asked me to choose a group of people through which He planned to change the world forever, I am certain I would have done a terrible job. I probably would have started my search for the Apostles at all of the world's most prestigious universities and think tanks. I would have sifted through the ranks of the world's top companies for best marketing and management personnel I could find. I would have probably searched for a few really well known and respected celebrity types to act as spokespersons for my mission. I am certain my imaginary efforts would have ended in utter disaster.

Not so with the way Jesus actually and historically did things. He decided to start with simple folks. He chose seven or perhaps nine fisherman, who were basically the equivalent in today's world of everyday workers. He added two to four tradesmen or more skilled workers, one tax collector, and one whose political leanings were mentioned (a zealot) with no clue as to his profession. The common denominator was He chose helpers with who everyday people could relate. People just like you and I.

The sharing and spreading of our faith, which has the power to really transform the world, was entrusted not to those to whom the powers that be or popular opinion would consider the best and the brightest. Jesus choose everyday people like us. In other words, He choose you!

As is so often the case, some of the simplest things we find in the teaching and examples provided for us by Jesus have much larger implications than a cursory glance might provide. What we see in Jesus' teaching today, my sisters and brothers, is your importance in His Church. You are the everyday people who have the power and opportunity to invite others to explore and share our faith. You have the lived experience to be able to help future generations of Catholics and future leaders within our Church to see and understand what it looks like to be a follower of Christ in today's world.

Sure, God has called people like fathers Rich, Aubuchon, and me, as well as deacons Frank and Gene to special ministries in the Church, but let's be realistic. Our ministries are primarily focused on helping you, the people who are already here. The real and important work of spreading and sharing the faith to everyday people ... the important work of inviting people to learn more about God's love for them in the Church ... the real work, the critical task of being examples of God's love to the rest of the world rests with all of His followers. It rests with and in you and me both!

Let us give thanks that God did not call us to do this all by ourselves. Let us give thanks that He gave us each other, the church, and the Holy Spirit to strengthen and guide us along the way. And, let us answer the call he made to Peter, John, and James in today's reading. "Come after me"; we have work to do!

Fr. Mike, O.P.

Newman's Annual Trivia Night

**Saturday, February 1
6 pm in the MPR**

benefiting Tiger Pantry

Join us for Newman's annual Trivia Night on Saturday, February 1 in the MPR! All proceeds this year will go toward Tiger Pantry.

Doors open at 6 p.m. and trivia begins at 6:30 p.m. The cost for trivia is \$10/person, and teams can consist of up to eight people. There will be 10 rounds of trivia with 10 questions each round. Bring your own food and drink.

Prizes will be awarded to the winning team, the best themed team (costumes, table decorations, etc), and the team that collectively brings the most canned items. Mulligans will be available for purchase for \$10 or 5 items of canned goods. For more information or to sign up your team, visit *Parish Sign Ups*. Contact Theresa at theresa@comonewman.org with questions.

TITHING REPORT

Dec. 2019

As a "tithing parish," the Newman Center contributes 5 percent of the offertory each month to nonprofit organizations. You can read more about the organizations we tithe to at: www.comonewman.org/tithing

\$444.81	Adult Day Connection
\$533.77	Columbia Meals on Wheels
\$444.81	Coyote Hill Children's Home
\$266.89	Day Dreams Foundation
\$444.81	Food Bank of Central/NE MO
\$355.85	Habitat for Humanity
\$177.92	Heart of Missouri Girls on the Run
\$355.85	Life Network of Central Missouri
\$444.81	Love, INC.
\$177.92	Spectrum Health Care
\$533.77	St. Francis House
\$177.92	Tiger Pantry
\$355.85	True North
\$444.81	Voluntary Action Center
\$355.85	Welcome Home

THOUGHT FOR THE WEEK

February 2 | Feast of the Presentation of the Lord

Malachi 3:1-4; Psalm 24

Hebrews 2:14-18; Luke 2:22-40

**LIBRARY CLOSED THIS SEMESTER**

For the full catalog listing of the library, visit:

www.comonewman.org/dbd-ministries/kemper-library**MONDAY, JANUARY 27**

10 a.m.	Women's Spirituality/1922 W. Broadway
6 p.m.	Mass Planning Team Meeting/Aquinas
7 p.m.	RCIA/MPR
7 p.m.	Choir Rehearsal (5pm Saturday)/Chapel
7:15 p.m.	Student Choir Rehearsal/Chapel
9:30 p.m.	Power Hour/Chapel

TUESDAY, JANUARY 28

6:30 p.m.	Boy Scouts Troop 121/MPR
6:30 p.m.	Boy Scouts Troop 242/Lima
7 p.m.	Parish Council/Aquinas

WEDNESDAY, JANUARY 29

6:15 p.m.	CEP Classes/All Second Floor Classrooms
6:30 p.m.	EDGE Bible Study/Disciples
6:30 p.m.	Student Pastoral Council/Conference
6:30 p.m.	Choir Rehearsal (9am)/Chapel, Sacristy
7 p.m.	Choir Rehearsal (11am)/Chapel
7:45 p.m.	Mizzou CSA Exec/Conference
9 p.m.	Ephesians 3/MPR

THURSDAY, JANUARY 30

10 a.m.	Christology: Journey of the Heart/Disciples
7 p.m.	Encounter/Aquinas

FRIDAY, JANUARY 31

7 p.m.	EDGE Lock-in/MPR
--------	------------------

SATURDAY, FEBRUARY 1

3:30 p.m.	Music Rehearsal/Chapel
6 p.m.	Trivia Night/MPR

SUNDAY, FEBRUARY 2

8 a.m.	Music Rehearsal/Chapel
9 a.m.	Knights of Columbus Brunch/MPR
9 & 11 a.m.	Children's Liturgy/Lima, Merton, Day & Romero
9 & 11 a.m.	Nursery Open/De Porres
10 a.m.	CEP Classes/All Second Floor Classrooms
10 a.m.	Music Rehearsal/Chapel
1 p.m.	Altar Server Training/Disciples
2:30 p.m.	Financial Peace University class/Aquinas
3 p.m.	Music Rehearsal/Chapel
6 p.m.	EDGE/MPR
6:30 p.m.	Music Rehearsal/Chapel
6:45 p.m.	Life Night/Sacred Heart Education Building

Information for the bulletin is due by noon on the Friday before the weekend it is published. Dates may change with upcoming holidays. Please submit to Theresa Nguyen at theresa@comonewman.org.

MASS INTENTIONS

Monday, Jan. 27	Noon	† Martha Trauth
Tuesday, Jan. 28	Noon	† Robert Williamson
Wednesday, Jan. 29	Noon	
Thursday, Jan. 30	Noon	† Alexander C. O'Day
Friday, Jan. 31	Noon	† Jay Dittmann
Saturday, Feb. 1	5 p.m.	
Sunday, Feb. 2	9 a.m.	† Robert Williamson
Sunday, Feb. 2	11 a.m.	
Sunday, Feb. 2	5 p.m.	
Sunday, Feb. 2	8 p.m.	

PARISH FINANCES

January 18/19

Offertory	\$29,357.75
Month-to-Date	\$79,345.02
Budget for month	\$105,000.00
Variance	— \$25,654.98

CONTACT INFORMATION

602 Turner Avenue | Columbia, MO 65201 | (573) 449-5424
www.comonewman.org | All emails end in: @comonewman.org

Pastoral Staff

Pastor | Fr. Rich Litzau, O.P. | rlitzop
 Associate Pastor | Fr. Mike Ford, O.P. | mfordop
 Associate Pastor & Diocesan Vocations Director
 Fr. Christopher Aubuchon | vocations@diojeffcity.org
 Pastoral Associate | Sr. Karen Freund, O.P. | srkaren
 Deacon | Frank Ruggiero | frank.ruggiero
 Deacon | Gene Kazmierczak | deacon.gene

Campus Ministry

Director | Angelle Hall | angelle.hall
 Assistant Director | Yvonne Chamberlain | yvonne
 Development Director | JoAnn Shull | joann.shull
 Resident Campus Minister | Allison Stuesse | allison
 Office Assistant | Terri Brown | campus.ministry

Music & Liturgy

Director | Kelley Burns | kelly.burns
 Assistant Director | Joe Kouba | joe.kouba
 Assistant Director | Mary Mertes | mary.mertes

Faith Formation

Director of Religious Education | Emily Shull | emily.shull
 Director of Youth Ministry | Renee Molner | renee.molner
 RCIA Coordinator | Lisa Rose | lisa.rose

Office

Receptionist | Janet Kelly | reception
 Accounts Manager | Angie Claas | angie
 Communications Coordinator | Theresa Nguyen | theresa

➤ All registrations/RSVPs are found on the website under *Parish Sign Ups*:
www.comonewman.org/parish/parish-sign-ups

2019 TAX STATEMENTS

2019 tax statements are now available. If you have an email on file, you should have received your statement through email from angie@comonewman.org on January 14. Please check your spam folder. Paper statements for those without emails on file were stuffed in your stewardship packet and mailed to your home last week. If you would like to receive your statement electronically in the future, please contact the main office to add your email address to your record.

ANNUAL STEWARDSHIP RENEWAL



This weekend is "Discernment Weekend" for the annual renewal process. We encourage all parishioners to complete and turn in your "Good Faith" intention card and your "Serve & Be Served" ministry interests to the parish — either through the offertory baskets or by mailing them directly to Newman. The "Good Faith" card contains information on your gifts of prayer and finances. The "Serve and Be Served" card shares the ministries in which you are interested in the coming year. Please return both cards in the next two weeks. If you have any questions, please contact JoAnn Shull in the parish office. You can also find more information online as well as complete your intention card at comonewman.org/goodfaith.

SPRING ADULT FAITH FORMATION DISCUSSION

Join Sr. Karen for this semester's adult faith formation discussion on Christology: Journey of the Heart. For over 2000 years believers have been answering Jesus' question, "Who do you say that I am?" Fr. Robin Ryan's helpful insights from History, Scripture, and Theology will deepen our own response. The discussion will also briefly reflect on the upcoming Sunday Gospels. Join Sr. Karen on Thursdays beginning January 23 in the Disciples Room from 10-11:30 a.m.

FINANCIAL PEACE UNIVERSITY

As you close out on the holiday season, learn how to leave money stress behind and take control of your money. Debt is a thief. Take back your life! Get signed up for Financial Peace University today at fpu.com/1109176. Classes start Sunday, January 26, from 2:30 to 4:30 p.m. in the Aquinas Room, here at Newman and will run through March 22. Contact Patty Rodriguez with questions at (314) 681-5394.

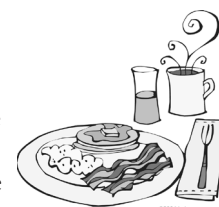
WOMEN'S SPIRITUALITY: GIFT OF LIFE-GIVING WATER

Women's Spirituality is a group of women meeting monthly to discuss selected topics of spirituality and to share faith. This semester, Sr. Karen, O.P. is leading the discussion on *Gift of Life-giving Water: Praying the Scriptures of Lent*. Lent is a journey of conversion involving all our relationships — with God, with ourselves and our families, and with other people. These Lenten Scriptures will help focus our efforts. Bring your Bible and your thirst for the living water Jesus offers us this Lent! Contact Sr. Karen at srkaren@comonewman.org with questions.

- **Session 1 | Exodus 17: Water from the Rock**
January 26 from 3-4:30 p.m. or January 27 from 10-11:30 a.m.
Meet at Sr. Karen's home: 1922 W Broadway
- **Session 2 | John 4:4-17: Water from the Well**
Saturday, February 29 from 8 a.m. to 12:30 p.m.
Meet at Newman MPR (Tri-Parish Women's Retreat)
- **Session 3 | John 13:1-17: Water for Washing Feet**
March 29 from 3-4:30 p.m. or March 30 from 10-11:30 a.m.
Meet at Sr. Karen's home: 1922 W Broadway

KNIGHTS OF COLUMBUS BRUNCH

Join the Knights of Columbus for a delicious brunch following the 9 a.m. and 11 a.m. Masses on Sunday, February 2, upstairs in the MPR. Menu includes eggs, bacon, sausage, pancakes, biscuits and gravy, and drinks. Free will donation; all proceeds go to support the CoMo LifeTeen trip to the Stubenville Youth Conference.



ALTAR SERVER TRAINING

Our next altar server training will take place in February. The training is open to any children that are in their second semester of third grade or older. It is two parts: the first part will be on February 2 from 1-2 p.m. in the Disciples Room and the second part will take place on February 9 from 1-2 p.m. in the Chapel. Please email Mary Mertes at mary.mertes@comonewman.org with any questions.

WILLING TO HOST A STUDENT FOR A SEMESTER?

From time to time, students reach out to campus ministry looking for a place to stay during a clinical rotation or for a short period of time for an academic program. If you are interested and willing to host a student, please contact Angelle Hall at angelle.hall@comonewman.org to be placed on a list. When Angelle receives requests, this group will be contacted with the details. You can then decide if you are willing to host a particular student.

EUCHARISTIC MINISTRY TO THE HOMEBOUND

A dedicated group of Eucharistic Ministers is ready to visit parishioners who are homebound or in long term care centers, even if the need is temporary. Ministers can also visit a parishioner who might be homebound as a caregiver for a loved one. Please contact Sr. Karen at srkaren@comonewman.org or 573-449-5424 to arrange this.

NEWMAN VOLUNTEER CORPS

PERSONAL ITEMS COLLECTION

Newman Volunteer Corps is collecting items for My Life Clinic this month. Requested items include diapers (sizes 4, 5 & 6), wipes, formula (both cow milk and soy based), baby bottles, pacifiers, teething rings, bibs, and baby soap and lotion. If you are able to make a more generous gift, My Life Clinic also needs infant car seats. Car seats must be new for safety reasons. Donations may be placed in the large silver bin in the Turner Street entrance.



BLOOD DRIVE TODAY



Newman's annual winter blood drive is **today**, Sunday January 26, from 8 a.m. to 1 p.m. in the MPR. Please come upstairs today and "Give the Gift of Life." You can donate blood if you:

- Are at least 17 years old (16 with signed parental form)
- Weigh at least 110 lbs.
- Haven't donated since December 1
- Have an ID (driver's license, donor card, etc.)
- Are in good health

COMO LIFE TEEN

LIFE NIGHT: GOSPEL SERIES

Tonight (January 26) is the first night of our Gospel series at Life Night! We won't meet next week because of the Super Bowl, but we'll meet again on February 9 to continue our series. For our upcoming spring semester Life Night schedule, find us on Facebook, Twitter, and Instagram at @comolifeteen. We meet for Life Nights on Sundays from 6:45-8:30 p.m. at the Sacred Heart Education building. Join us for dinner, friends, and games!

ENCOUNTER: EXPLORE YOUR FAITH FURTHER

Join us for the very first Encounter this Thursday from 7-8:30 p.m.! Renee will be talking about how we're all on individual faith journeys and how we can support each other through them. Then we'll have some free time to hang out, play games, or even do homework(!). Encounter meets in the Aquinas Room at Newman from 7-8:30 p.m. every other Thursday starting January 30.

MIDWEST MARCH FOR LIFE

CoMo Life Teen will be going to the Midwest March for Life in Jefferson City on February 1. If you have any questions, email Renee. Space is limited, but this is free!



WE PRAY

for our Newman Community

For those who are sick.

For our beloved dead, especially Rod Gelatt and Fr. James Offutt. Eternal rest grant unto them and let perpetual light shine upon them. May they rest in peace. Amen.

Pope Francis' January Prayer Intention: We pray that Christians, followers of other religions, and all people of goodwill may promote peace and justice in the world.

Bishop McKnight's January Prayer Intention: For an increase in Christian unity, racial harmony, and respect for the dignity of all human life; that Christians everywhere may work together to promote peace in our homes and communities throughout the world.

Call the Parish Office to request prayers or to have the Eucharist brought to the homebound. Names will be listed for two weeks.

A STEWARD'S WAY

BIBLICAL ROOTS OF STEWARDSHIP

Stewardship is ... A Response to Gratitude (Genesis 14:1-20)

"When Abram returned from his defeat of Chedorlaomer ... Melcizedek, the king of Salem, brought out bread and wine ... He blessed Abram ... Then Abram gave him a tenth of everything." This is the first time the Scriptures mention giving a tenth. If you'd like to read the details, please pick up your bible and turn to Genesis 14. But it's important to note the order of events in this passage. Abram had already won the battle. He did not need to give a tenth to secure success; instead, he gave a tenth after his victory. Scripture scholars commonly explain this behavior to show that Abram gave a tenth as an offering out of gratitude to God for having given him the victory.



Through this lens, we learn two things. First, Abram attributes his victory to God. He knows that he would not have been able to achieve victory in battle without God. Second, he tangibly gives thanks to God for the gift of victory given to him. Abram's response is one of gratitude, not of forced obligation.

When we look at our own lives, what victories in our lives do we contribute to God? How do we show our gratitude? Is it a grateful, holy response or is it one of obligation? How can we shift our hearts and minds to be more like Abram's example?

Next week, we will begin to explore the biblical roots of stewardship in the New Testament.

CEP & EDGE

EDGE LOCK-IN

All sixth, seventh, and eighth graders are invited to join us for our Super Sweet EDGE Lock-In from 7-11 p.m. in the MPR. We're planning our own night of sweet treat themed games, prizes, and snacks. Please bring a salty snack to share, and we're asking for a \$5 donation per student to support our sister parish. All students must have a permission form, which is available on the *Parish Sign Ups* page or at the event.

FIRST COMMUNION PARENT MEETING TODAY

If you have a child who is in second grade and up who would like to prepare to receive First Communion, please join us today (January 26) from 12:15-1:30 p.m. in the Disciples Room. Contact emily.shull@comonewman.org for more information if you can't make this meeting.

FIRST COMMUNION BLESSING

Students preparing for First Communion will receive a special blessing at the 9 and 11 a.m. Masses on February 9. Please plan to bring a paper chalice decorated with your child's first name (available on the parish website).

NO CHILDREN'S LITURGY FEB. 9

We will not have Children's Liturgy on February 9 just to make sure all second graders are present for the First Communion blessing. CEP continues as usual, and the nursery will be open.

KIDS' CORNER

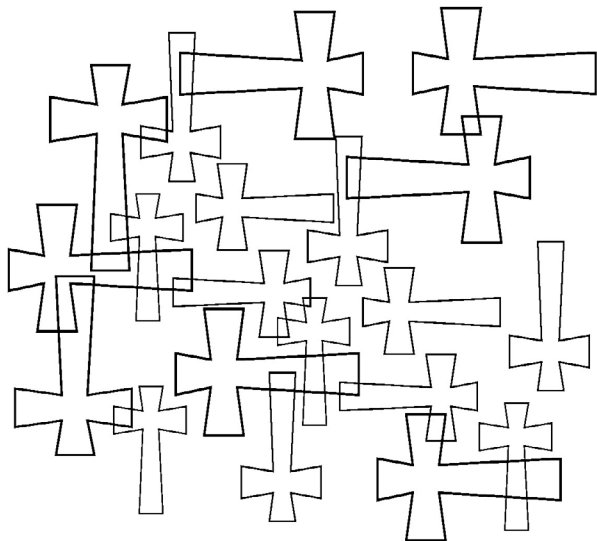
For Kids: Jesus asked us to follow him. How will you show others that you follow Jesus?

For Parents: Jesus calls each of us the way he called the apostles. Talk as a family about how we can each live out that call from busy parents to small kids or teens.



Puzzle

How many crosses can you count?



©LPI

THE ANSWER IS TWENTY CROSSES

CAMPUS MINISTRY



All registrations/RSVPs for campus ministry are found on the website under *Event Sign Ups*: www.comonewman.org/campus-ministry/cmsignup

POWER HOUR RESUMES

Welcome back, students! Power Hour, the late night hour of Eucharistic Adoration, resumes on Monday, January 27 at 9 p.m.



CSA SWEATSHIRT

Order your new Catholic Student Association sweatshirts today! They cost \$25 (sizes 2X-4X are \$30). Purchase yours now on the *Event Sign Ups* page! Sale ends February 1, 2020. For more information contact Maria Olivos at maria.olivos@mail.missouri.edu.

MASS AT STEPHENS COLLEGE

Campus Ministry will host Mass at 12:30 p.m. in Firestone Baars Chapel (1306 E. Walnut St.) at Stephens College on Tuesday, February 4. All are welcome. Contact Yvonne Chamberlain (yvonne@comonewman.org) for more information.

BUSY PERSON'S RETREAT

Are you seeking to grow your prayer life? Do you need help discerning God's voice your life? Are you looking for a retreat that you can do without leaving home? Or are you interested in learning more about religious life? If you answered "Yes" to any of these questions, then Busy Person's Retreat is just for you! Registration is now open! Busy Person's takes place February 9-13. During the retreat, you will meet with a spiritual director for 45 minutes each day and commit to 30 minutes of personal prayer each day, while still going to classes, work, and all of your other life commitments. Space on this retreat is limited, and slots fill up quickly so sign up now on *Event Sign Ups* (see link above) to secure your place. The retreat costs \$15; scholarships are available if needed. Contact Yvonne (yvonne@comonewman.org) for more information, scholarships, or if you have questions.

SPAGHETTI DINNER



Wednesday, February 12
5-6:15pm | MPR

